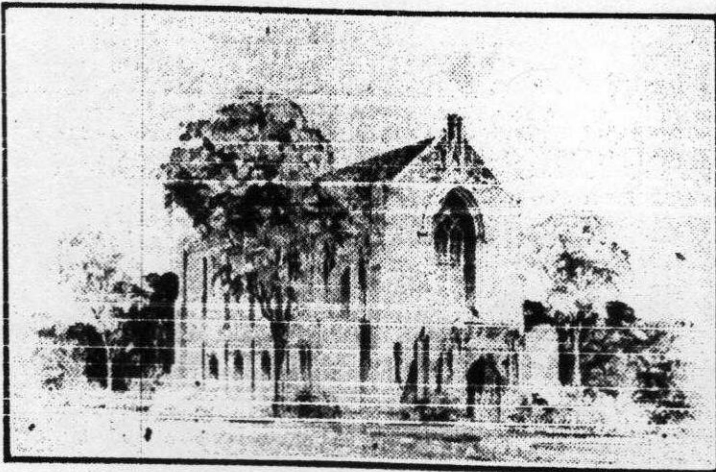
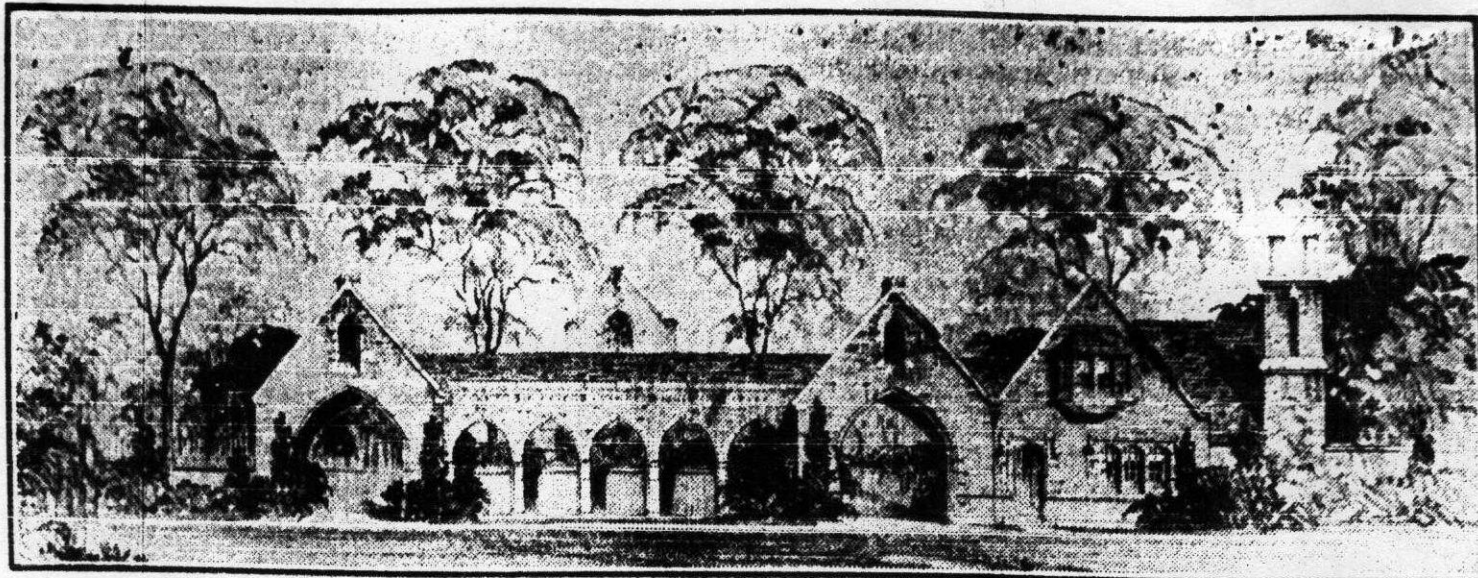


GOTHIC BUILDINGS TO ADORN MEMORIAL PARK



New Type Cemetery Planned Tombstones to Be Barred at Forest Lawn Memorial—To Be Beauty Spot

A cemetery as lovely as a park and with no sunken grave nor leaning tombstones to mar its beauty, a place where loved ones will want to stroll—such a burial ground is planned near city by the Parkland Development Co., headed by E. M. Bride, D. T. Peters, R. F. Book and P. M. Ludt.

Plans have already been drawn up for Forest Lawn Memorial Park, as the new cemetery is to be known, and work on the landscape and buildings will begin soon. The site of the memorial park is to be the 50 acres of the Hugh Bonnell farm, which fronts on Market St. Extension. It is south of the Shields Road, north of the Ridgewood subdivision, and runs through to Glenwood Ave. Extension. Broad lawns, radiant beds of flowers, towering trees and stately architecture will make the park a place of perpetual beauty.

No tombstones or monuments will be allowed in the park. Bronze markers, placed flush with the ground, will be the only grave markers. One will hardly know that he is in a cemetery and the atmosphere will minimize the pain of the final parting.

The purpose of Forest Lawn Memorial Park is expressed by the sponsors as follows:

"Not An End"
"In building Forest Lawn Memorial

Park, we believe in happy eternal life. We are certain the old cemeteries of today are wrong because they depict an end, not a beginning. They have become unsightly stoney fields full of inartistic symbols and pressing customs, where class distinction is perpetuated forever.

"We have resolved to make Forest Lawn Memorial Park, we believe in happy eternal sunshine is unlike darkness, eternal life is like death. In the presence of customary signs of death, the park will be filled with towering trees, sweeping lawns, splashing fountains, noble memorial architecture and that makes for beauty."

The park will be a non-sectarian burial ground and a trust fund will be established to keep the cemetery perpetually cared for.

The entrance and administrative buildings will be of English Gothic architecture and their interiors will be light and color.

The architects are Dunn and Copper, of Cleveland. R. M. Haley has been named sales executive.

Here are some of the structures that are planned to beautify the new Forest Lawn Memorial Park, which will occupy the Hugh Bonnell Farm on Market St. extension.

The large picture shows the entrance building, and the smaller shows the attractive chapel which is planned. Both will be in English Gothic style. The chapel will have accommodations for funeral services.

FOREST LAWN GETS 'WRITE-UP'

"The Modern Cemetery"

Publishes Article on
Burial Ground

✓ *on*
June 8, 1934

"The Modern Cemetery," a trade publication, for June, features Forest Lawn Memorial Cemetery, Youngstown, the front page picture being that of the entrance to the local burial grounds.

Another full page is devoted to pictures taken at Forest Lawn "Cupid's garden," mirror pool, entrance portal, musical tower, bird sanctuary and shelter house.

The article says, "Forest Lawn is one of the outstanding properties of its kind in America." It cites the reinforced drives, well-architected buildings and rare shrubs and trees planted on the property.

The article quotes Paul M. Ludt, vice president in charge of sales, as saying: "We have sold more than \$1,000,000 worth of lots in our new Memorial Park since its inception in 1931."

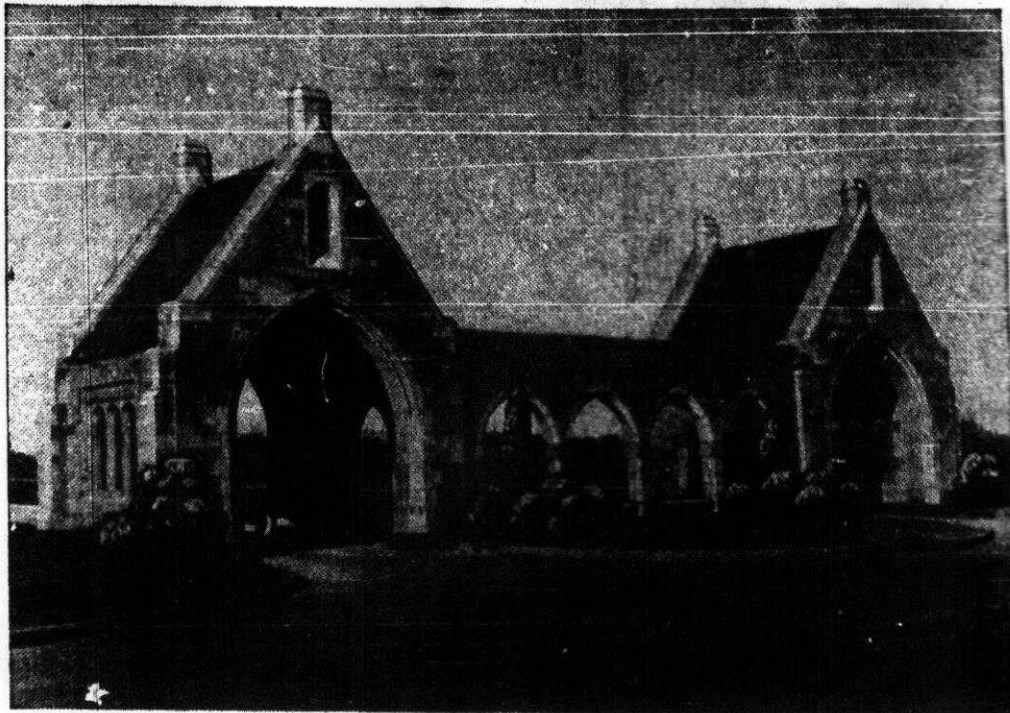
Tells of Sales Plan

The drainage system, perpetual care and sales plans, the high quality of the architecture, and many other phases of the development of Forest Lawn are discussed.

"Forest Lawn by using modern approved selling methods has accomplished in a few months what it takes the old-type cemetery years and even generations to accomplish, namely, sell and build an entire cemetery

"The plans call for the sale of every lot and section in the park during the construction period. The selling plan provides for the concentration of selling efforts in one block at a time. The property is sub-divided into about 6,000 lots of six graves each. These lots are grouped into blocks of 175 each. All the lots in one block are sold before starting the sale of the next blocks. Enough is set aside from the proceeds of the sale of each lot to provide perpetual care."

Stone Gateway to Memorial Park



Pictured above is the stone gateway of English Gothic design that leads into beautiful Forest Lawn Memorial Park on the Road of Remembrance just beyond Forest Glen. The gateway is built of Mount Pisbia stone, rich in color and giving the appearance of great age as blended by the architect.

Over Half-Million Is Spent In Improving Memorial Park

New Note of Beauty and Simplicity Struck in Forest Lawn Burial Place

With more than half million dollars spent in the last two years for plots in Forest Lawn Memorial Park, the Parkland Development Co., spent over \$500,000 in that same period for the tract and in its improvement and beautification program.

This week, more than \$35,000 in contracts will be let for building new boulevards, adding to the drainage system, grading, planting new trees and shrubbery and affording work for many now unemployed.

Memorial parks are an American idea, started 15 years ago, when the first one was built in Glendale, Calif. In the years this park and "The Little Church of the Flowers" that graces it, have become nationally known and famous. To show how the sad note has been lifted by such a beautiful spot for the rest of the dead, over 1,000 weddings have been held in this church.

Memorial parks represent a decided change of thought in America with reference to the burial of the dead. The garden cemetery was first and grew into the modern memorial park. The most beautiful burial grounds of the world have been the result, contrasting sharply with the graveyard of the past with its congestion of tomb monuments, grave stones, curbs, lot enclosures and fences, gnarled and ancient trees and often overgrown with weeds.

The new memorials are beautiful parks and through funds set aside

they are perpetually maintained as such. Well-kept lawns are broken into beautiful vistas by judicious placing of trees and shrubs.

Somberness Gone

Then there are stately buildings, shaded walks and drives, a sparkling fountain and pool, all adding to the attractiveness. None of the somberness of the graveyard is found. No monuments or tombstones grace such a park. The park itself, in all its grandeur, is dedicated as memorial to all who sleep within it. The necessity for private memorials is removed. Graves are marked in democratic simplicity with tablets of bronze, anchored in concrete, and set flush with the lawn at the head of the grave. Such markers designate clearly the graves without show or ostentation, and without marring the beauty of the lawn.

MONDAY
MAY 7, 1933

In 1930 a group of local men organized Forest Lawn. The founders pledged themselves to build a beautiful burial park which would be, "A living shrine of perpetual beauty, dedicated to sacred memories."

There are 48 acres in the site and the park adjoins Mill Creek Park. There is a gentle slope, assuring perfect drainage, adapting itself to the skill of the landscape artists.

The development and maintenance of Forest Lawn calls for the expenditure of beyond a half million dollars, and when completed promises to be one of the most beautiful burial parks of America. A sufficient trust fund is being set aside to endow all plots in the park and provide for their perpetual careful upkeep.

Chapel Service

One of the services and comforts offered at memorial park is the exclusive chapel tent service. It is designed for privacy for family and friends of loved ones gone. The main room of the chapel tent is large, allowing placement of floral offerings together with ample seating arrangements for the family and close friends. The casket rests on a mound banked with flowers. No grave yawns before the eyes of loved ones. The place is all green grass and covered with matting. Regardless of weather conditions everything is arranged for the comfort and consolation of those at the last service. A flower canopy that protects the flowers for days is also another service.

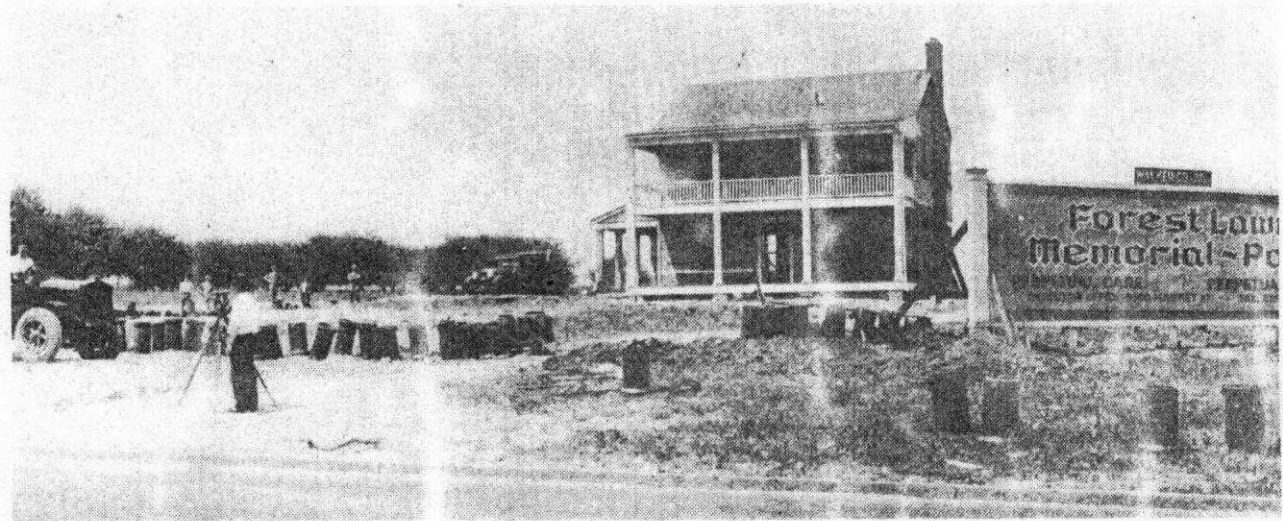
A beautiful and imposing stone gateway now graces the park at the entrance on the Market St. Extension side. From it lead wide concrete and asphalt drives to all parts of the park. There are islands among the drives where flowers and shrubbery add to the beauty and refinement. In the extreme rear eventually will rise a stone church.

This church, or chapel will follow the design of the many little churches that dot the landscape of Old England. The construction will embody the same principles of permanent construction that were used in the gateway. Exterior will be of the colorful Mount Pisbia stone, while the interior will be of stone and with heavy wood beam ceiling. It will be a quiet, restful place for final services. On the lower level of the chapel will be located the administration offices.

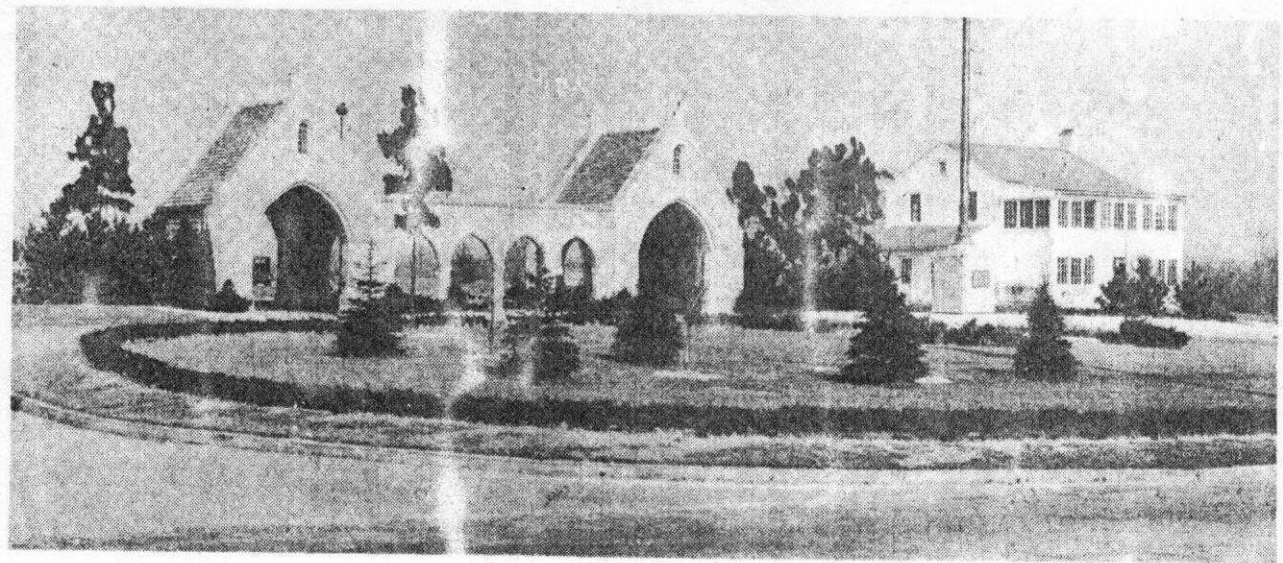
A quiet pool, fed by a fountain, and surrounded by green shrubs and benches where people may rest, is also a part of the park plan.

With these buildings and unusual landscaping, Memorial Park will be a beautiful garden—"Where the memories of beautiful lives will be kept beautiful always."

Developers and trustees of Memorial Park are: Paul M. Ludt, R. F. Book, E. M. McBride and D. T. Peters. Landscaping was and is being done by Pitkin and Mott, Cleveland; architects in charge are, Dunn and Copper, Cleveland, while engineering is by Albert A. Haenny, Youngstown.



IN THIS PHOTO, WORK BEGINS at the cemetery.



WHEN FIRST OPENED, Forest Lawn offices were located in the structure at the right of the entrance to the grounds.